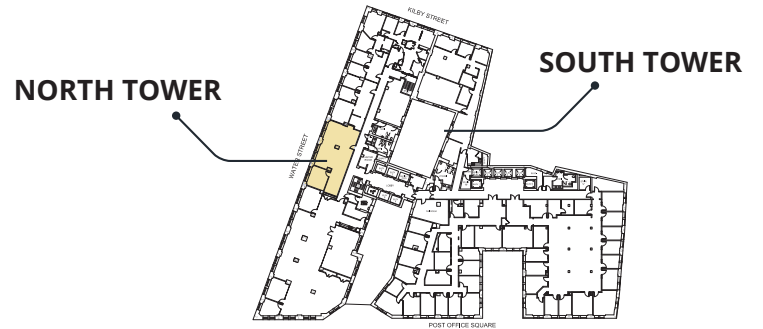


**TEN**  
POST OFFICE  
SQUARE

**FLOOR 6 1,640 RSF**  
SPEC SUITE



**KEY PLAN**

For more information:

**Roger Breslin**  
Roger.Breslin@am.jll.com  
+1 617 531 4146

**Bryan Sparkes**  
Bryan.Sparkes@am.jll.com  
+1 617 531 4234

**Dan Cavanaugh**  
Dan.Cavanaugh@am.jll.com  
+1 617 316 6490

Ownership:



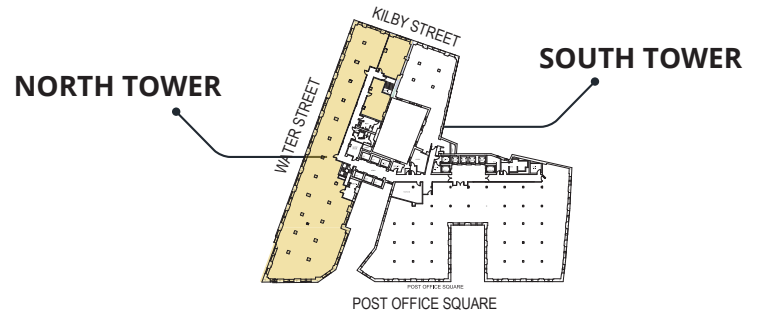
Leasing:



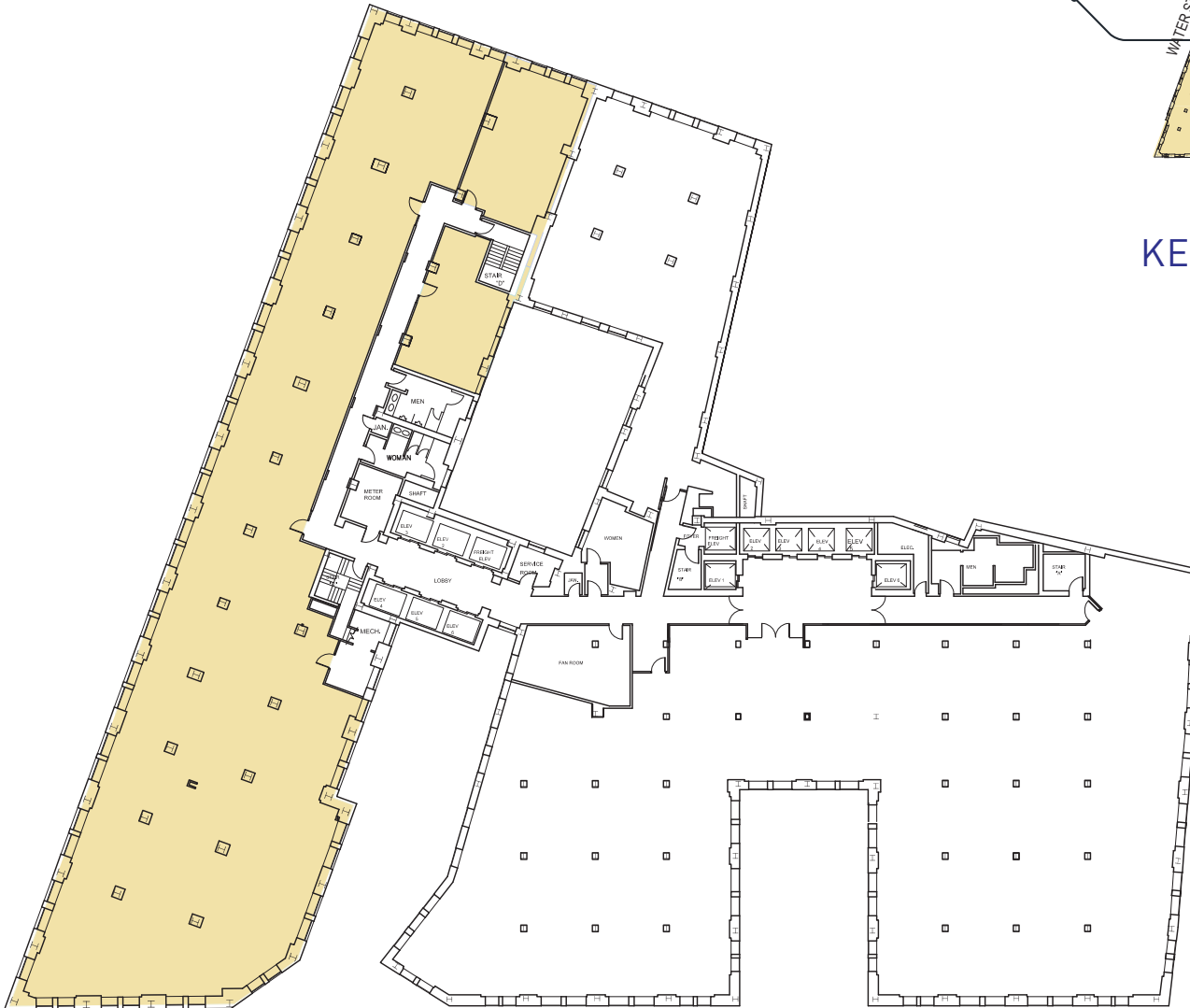
# TEN

POST OFFICE  
SQUARE

## FLOOR 12 12,397 RSF



### KEY PLAN



For more information:

**Roger Breslin**  
Roger.Breslin@am.jll.com  
+1 617 531 4146

**Bryan Sparkes**  
Bryan.Sparkes@am.jll.com  
+1 617 531 4234

**Dan Cavanaugh**  
Dan.Cavanaugh@am.jll.com  
+1 617 316 6490

Ownership:



Leasing:

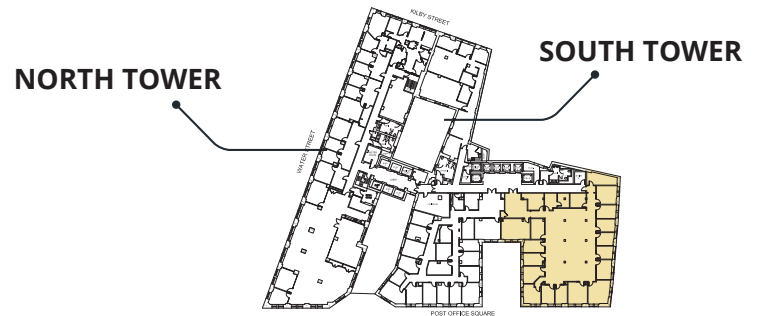


# TEN

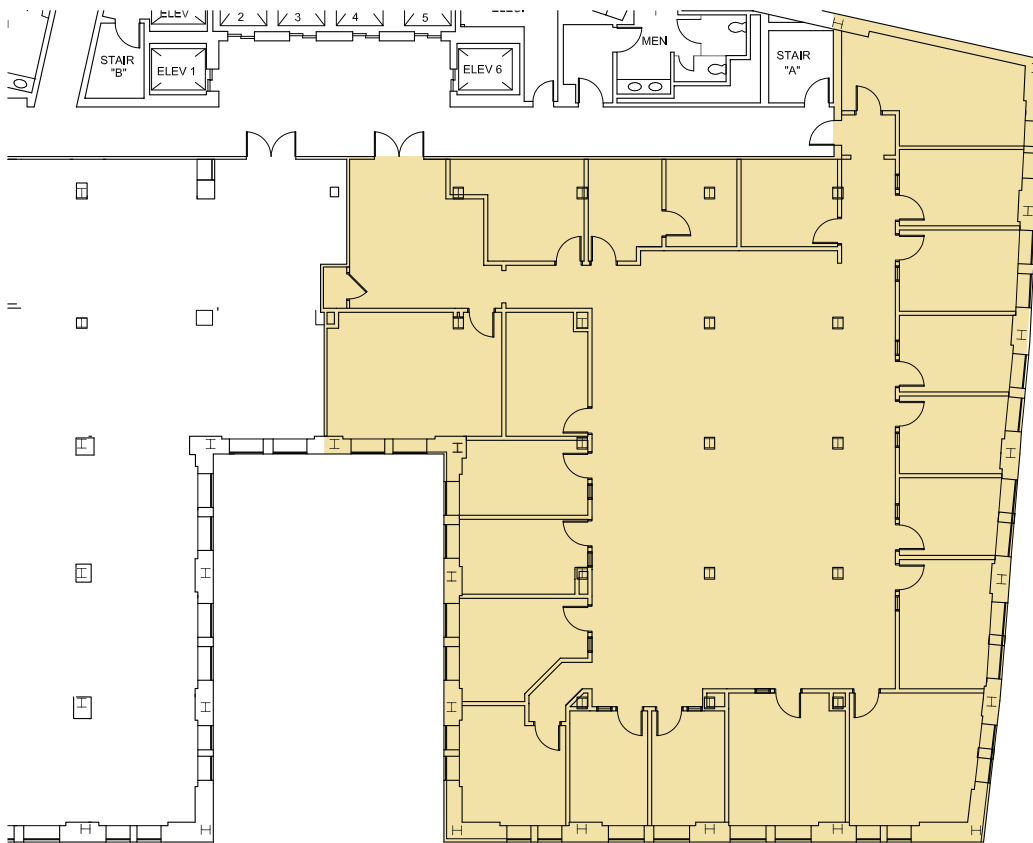
POST OFFICE  
SQUARE

## FLOOR 6 8,286 SF

AVAILABLE JULY 1, 2020



### KEY PLAN



For more information:

**Roger Breslin**

Roger.Breslin@am.jll.com

+1 617 531 4146

**Bryan Sparkes**

Bryan.Sparkes@am.jll.com

+1 617 531 4234

**Dan Cavanaugh**

Dan.Cavanaugh@am.jll.com

+1 617 316 6490

Ownership:



Leasing:

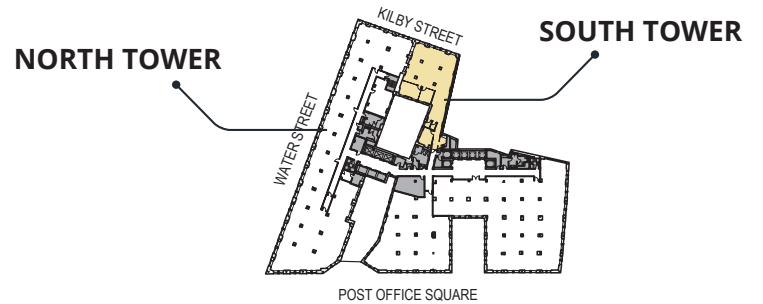
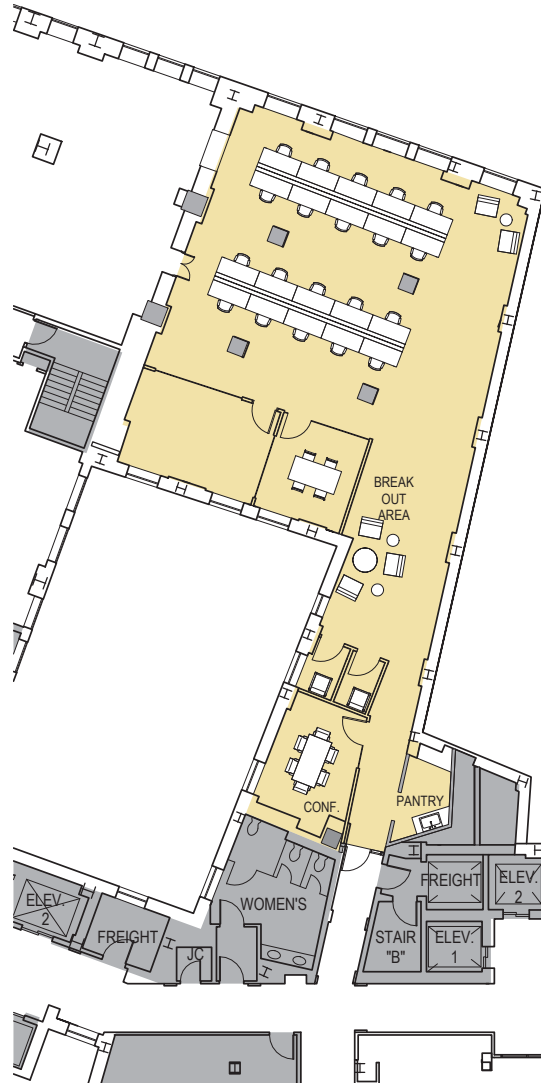


# TEN

POST OFFICE SQUARE

## FLOOR 10 3,490 RSF

SPEC SUITE



### KEY PLAN

For more information:

**Roger Breslin**  
Roger.Breslin@am.jll.com  
+1 617 531 4146

**Bryan Sparkes**  
Bryan.Sparkes@am.jll.com  
+1 617 531 4234

**Dan Cavanaugh**  
Dan.Cavanaugh@am.jll.com  
+1 617 316 6490

Ownership:



Leasing:

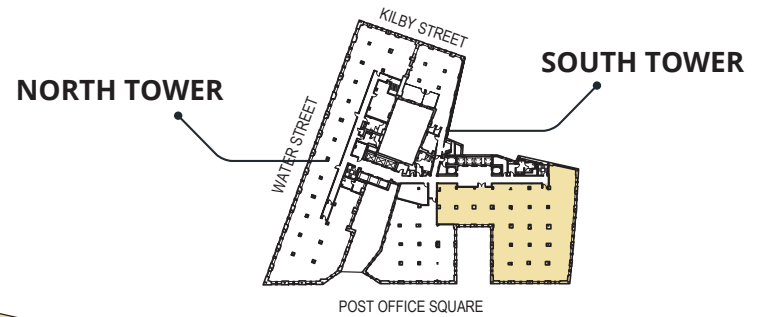
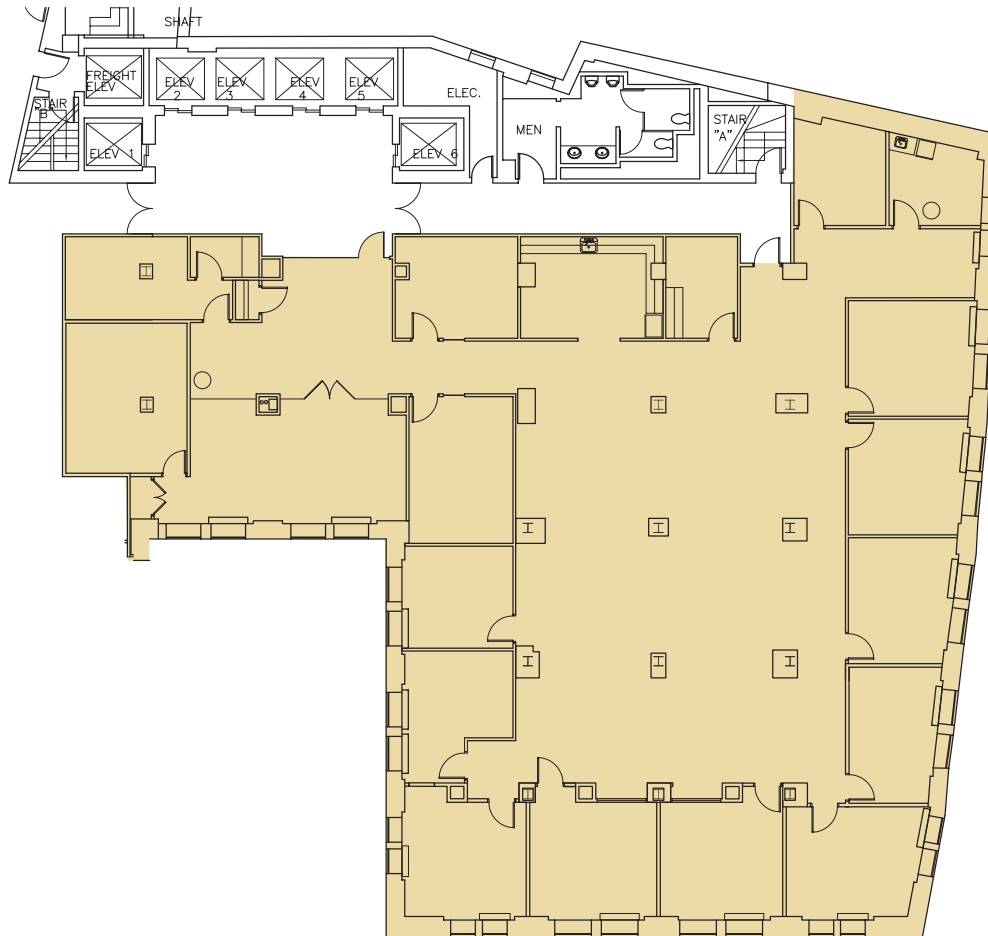


# TEN

POST OFFICE  
SQUARE

## FLOOR 11 9,424 RSF

AVAILABLE MARCH 1, 2020



### KEY PLAN

For more information:

**Roger Breslin**  
Roger.Breslin@am.jll.com  
+1 617 531 4146

**Bryan Sparkes**  
Bryan.Sparkes@am.jll.com  
+1 617 531 4234

**Dan Cavanaugh**  
Dan.Cavanaugh@am.jll.com  
+1 617 316 6490

Ownership:

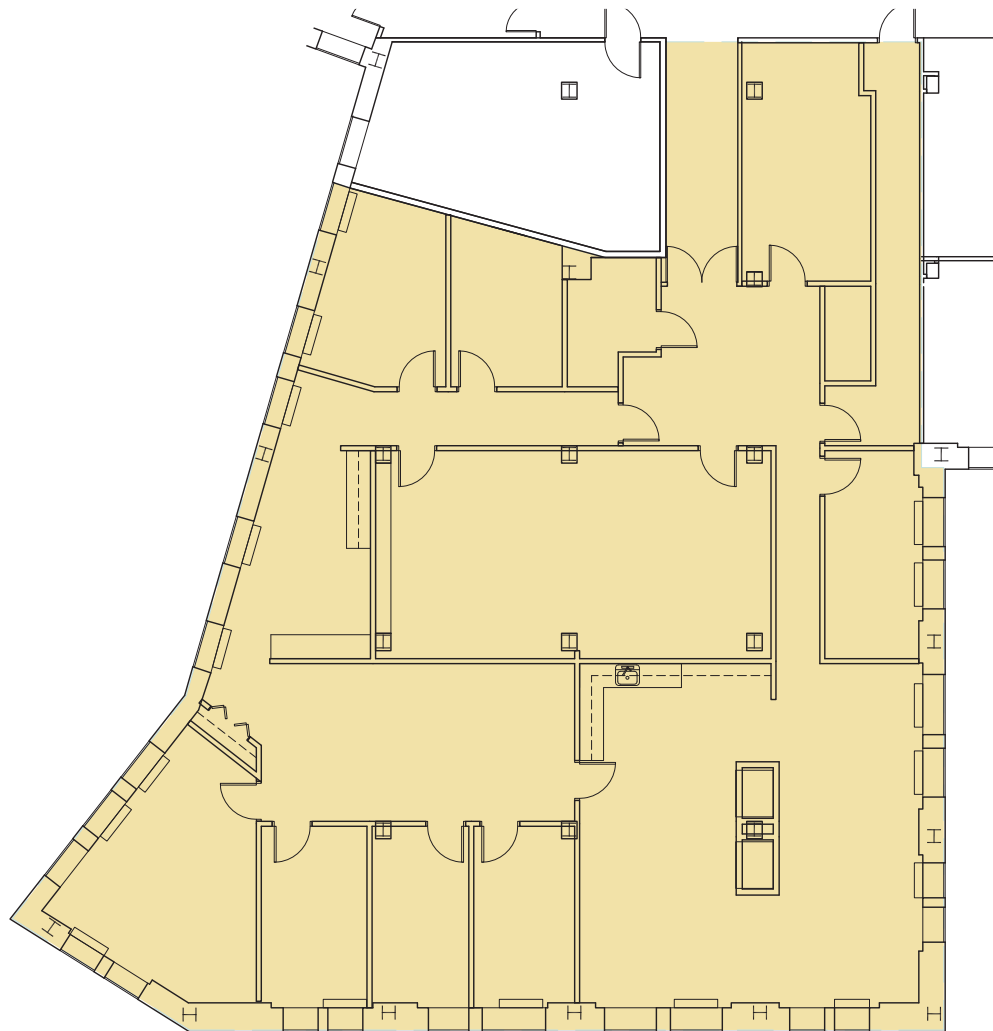


Leasing:



**TEN**  
POST OFFICE  
SQUARE

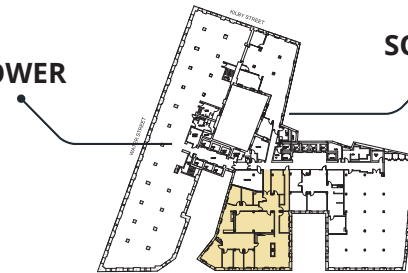
**FLOOR 13 5,747 RSF**



POST OFFICE SQUARE

NORTH TOWER

SOUTH TOWER



**KEY PLAN**

For more information:

**Roger Breslin**  
Roger.Breslin@am.jll.com  
+1 617 531 4146

**Bryan Sparkes**  
Bryan.Sparkes@am.jll.com  
+1 617 531 4234

**Dan Cavanaugh**  
Dan.Cavanaugh@am.jll.com  
+1 617 316 6490

Ownership:



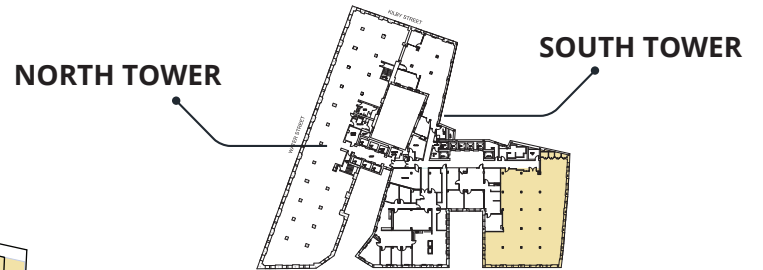
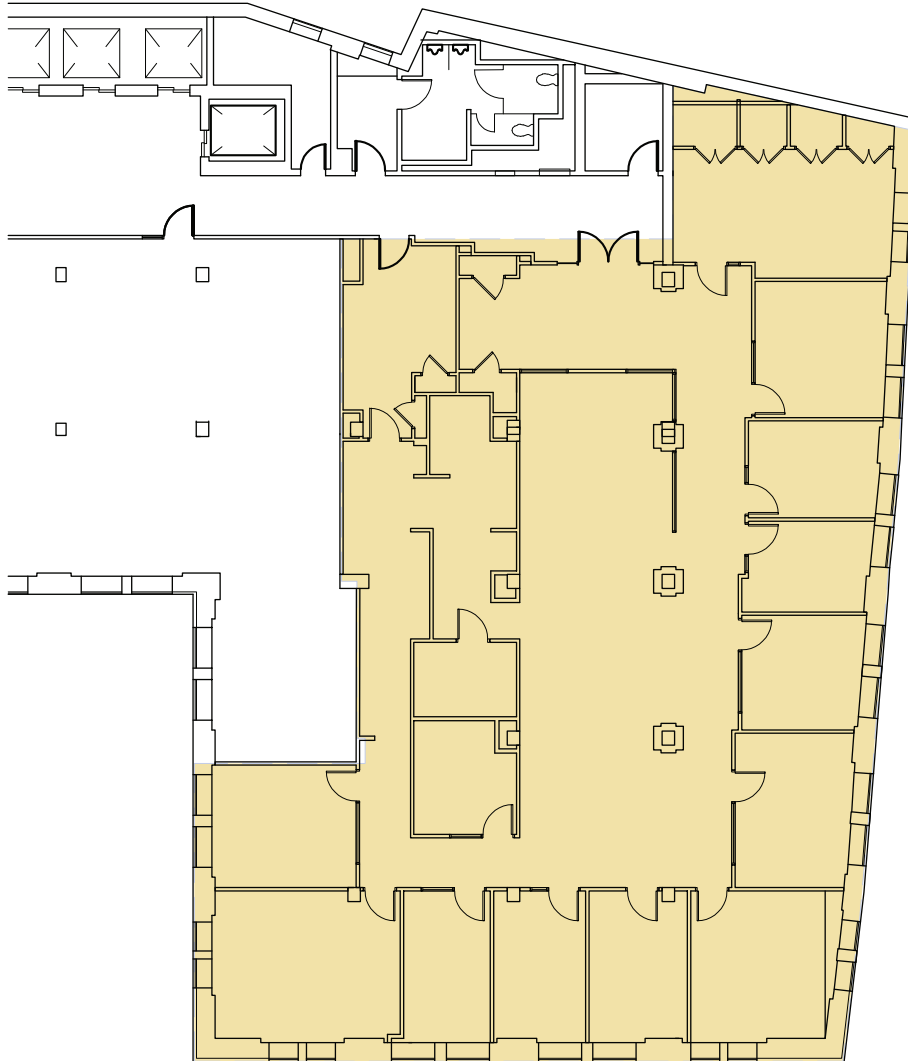
Leasing:



**TEN**  
POST OFFICE  
SQUARE

# FLOOR 13 6,617 SF

AVAILABLE AUGUST 1, 2020



## KEY PLAN

For more information:

**Roger Breslin**

Roger.Breslin@am.jll.com

+1 617 531 4146

**Bryan Sparkes**

Bryan.Sparkes@am.jll.com

+1 617 531 4234

**Dan Cavanaugh**

Dan.Cavanaugh@am.jll.com

+1 617 316 6490

Ownership:



Leasing:

